

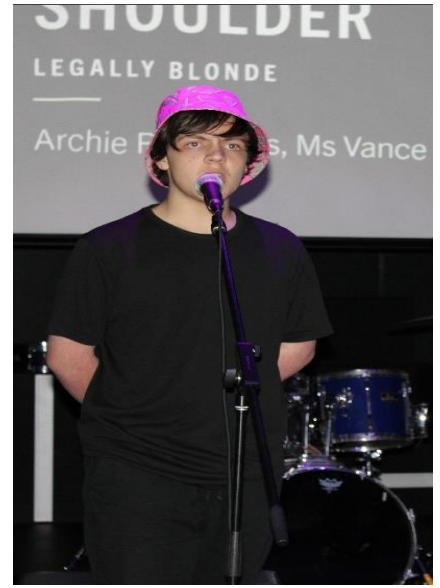


HEATHMONT
COLLEGE

HEATHMONT COLLEGE INSTRUMENTAL MUSIC PROGRAM 2025

INSPIRING CREATIVITY AND EXCELLENCE

CURIOSITY | COMPASSION | COMMUNITY



WELCOME TO THE INSTRUMENTAL MUSIC PROGRAM AT HEATHMONT COLLEGE

This handbook provides information for students and parents about what is offered to support their music development. It details the program requirements, fees and charges, instrument hire and extras offered, as well as example timetables and pathway opportunities.

AIMS OF THE INSTRUMENTAL MUSIC PROGRAM

The aim of the Instrumental Music Program is to develop student's musical, social and personal awareness through participation in lessons, ensembles, rehearsals, incursions, workshops and performances. We offer a variety of experiences which are developed in response to students needs and interests.

To ignite a passion for music in our students and encourage them to read, compose and perform confidently and with pride. Heathmont College offers a holistic approach to instrumental music education. Through exploration, play, creativity, performance, and commitment students develop a range of skills and knowledge necessary to be successful 21st Century musicians.

We cater for beginners through to advanced musicians. The College provides tuition in a wide variety of instruments led by professional instrumental music teachers.

INSTRUMENTAL MUSIC AT HEATHMONT COLLEGE

- is an Opt-in extra-curricular program
- integrates listening (aural) development, performance and music language and literacy
- promotes individual and social aspects of music making
- promotes equality and inclusivity
- develops critical and creative thinking and personal responsibility
- creates opportunities for students to make connections with like-minded students
- supports students to build meaning and connectedness to school



INSTRUMENTS OFFERED

The College offers a variety of instruments and tries to cater for all instruments requested. Our main instruments offered in the program are listed below, however, if your student wishes to learn an instrument that is not on this list, please contact the College to discuss further opportunities.

Woodwind

Brass

Strings

Guitar

Bass Guitar

Drums / Percussion

Voice

Keyboard / Piano

Electronic (produce music on a laptop)



THEORY COURSES OFFERED

- General Theory and Aural Development Sessions
- Composition Workshops
- Recording and backstage management

For more information about theory courses and workshops please contact our instrumental music coordinator on 9871 4888 or email heathmont.co@education.vic.gov.au

LESSONS

Lessons are held during the school day and are usually provided in small groups for 30 minutes each week. Individual lessons may also occur depending on student's level of skill and student groupings. VCE students are given priority. All Year 12 students are offered individual lessons.

Lessons are timetabled on a two-week rotating basis to minimise disruption to the student's school day. Lesson timetables are put onto the students Compass timetable and displayed on the Instrumental Music noticeboard outside the music rooms at the start of each term.

It is the student's responsibility to check their timetable before lessons, and to remember their lesson times.



TIMETABLE

The timetable does not run on the same time structure as normal scheduled classes.

We advise students to arrive up to 5 minutes prior to the start time to set up their instruments prior to the lesson commencing.

Where possible the timetable will avoid taking students out of Maths, English or VCE Enhancement Classes. If this is unavoidable the timetable will rotate each week to avoid students missing these classes on a regular basis.

Please note: The Instrumental Music Timetable does not run to the same times as the classroom bells, some lessons will run into or start during recess.



SCHOOL ENSEMBLES

Students learning a musical instrument are encouraged to participate in an ensemble appropriate for their ability and instrument as soon as they are able. Playing in an ensemble develops essential skills that all musicians should have to be successful well-rounded performers. A firm commitment is required for these groups, with students expected to maintain a commitment to attend all rehearsals and performances until the end of Term 4.

Heathmont College conducts several ensembles that are created to meet the interests of the students. These ensembles are updated each year. Above all we promote student voice and agency.

Students that wish to lead or create new ensembles are given every opportunity to do so.

Core Ensembles may include:

- Contemporary Band Program
- Vocal Ensemble
(*Contemporary Choir*)
- Production Band
- Strings Ensemble
- Stage Band



PERFORMANCES, WORKSHOPS AND INCURSIONS

As part of the tuition fee students will have the opportunity to participate in workshops and incursions. The following are examples of workshops that have been run in previous years. More information will come out regarding activities, events, workshops and incursions.

Instrumental Music Incursion Day

This incursion offers students the opportunity to participate in different workshops throughout the day led by external and internal specialists. For example: performance practices workshop led by a leading professional performer, improvisation workshop, instrumental skills workshop, building technique and practice skills workshop.

African Drumming Incursion

Run by guest performers this interactive African Drumming Workshop will get you up out of your seats and moving to the beat.

Music Composition Workshops

Depending on interest in the program and staffing available this workshop can run as a lunchtime activity or a series of afterschool sessions. Students learn to compose in small groups and as solo instrumentalists.

Supersonic Sounds Festival

The festival is held at the College outside. Students set up an outdoor stage area with band equipment. The evening usually includes a BBQ dinner and other entertainment.

Instrumental Showcases

Throughout the year students invite their parents, guardians and friends to a small performance evening where students are offered the opportunity to perform a solo work and works as part of smaller groups or larger ensembles.

Events and Assemblies

Students are also able to perform at school events such as fundraisers, activity days, local school fetes and fairs, competitions, assemblies and special events. These are subject to change depending on events that are run during the year.

Musical Productions

The College has put on many great musical productions including Grease, Seussical Jr, Annie Jr, Hairspray, and Rock of Ages. Students rehearse together as an ensemble throughout the year and perform live at the show.



INSTRUMENT HIRE

A limited number of instruments are available for hire from the Music Department. After the first year of learning students are encouraged to purchase their own instrument if possible. Students are expected to take care of their hired instruments and return them in the same condition they received them (we acknowledge general wear and tear).

It is generally recommended that students hire for no longer than one year if they are intending to continue learning to make the College instruments available for new students.

PURCHASING INSTRUMENTS

Parents and guardians wishing to purchase an instrument should seek guidance from their teacher. Our advice is to buy brand names. Cheap brands lack the build quality, ergonomics, playability, tuning, tone, and serviceability of quality brands. A reputable brand second-hand instrument is usually a better option than a lower priced new instrument.

UNIFORM POLICY

Students will be required to source basic performance attire for college events and performances. Students usually wear school uniform to external events; however, some events require different forms of performance attire.

Formal Ensemble Performances – Performance Blacks:

- Black Pants/Skirt
- Black collared shirt/neat plain black t-shirt
- Black stockings/tights

Performance style dress:

Performance style dress is clothing appropriate to the style or genre of performance. For example, a formal solo recital requires formal wear, a rock band performance requires appropriate casual attire.

The Instrumental Music Coordinator will send out information with the event details at least 4 weeks prior to the event.



HOW TO APPLY

Students will need to submit an Expression of Interest form, via our website <https://www.heathmont.vic.edu.au/> or by filling out the form attached to the back of this handbook.

Private Lessons

Students that undertake lessons outside of the school are encouraged to participate in our ensembles program, workshops and performance opportunities. Please fill out the Expression of Interest form to express interest in participating in these activities.

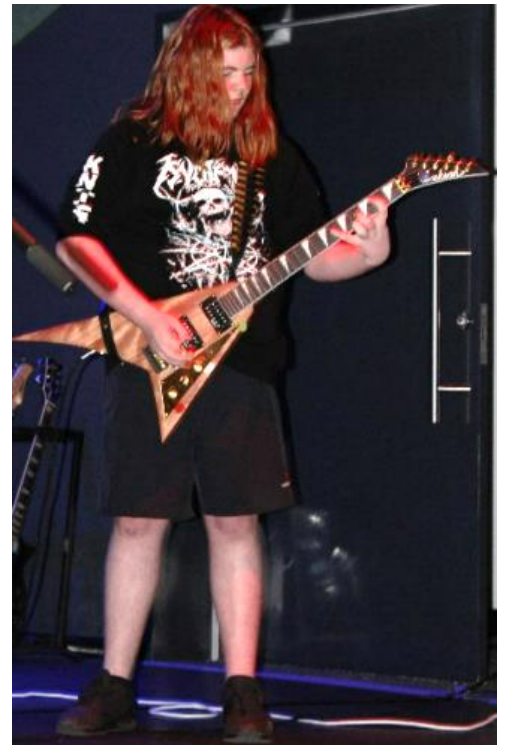


As part of the agreement to enrol in the Instrumental Music program at Heathmont College, the following commitments are required:

1. Attendance at ensemble rehearsals and performances **are compulsory.**
2. Attendance at music lessons is expected. If students are consistently absent from lessons, you will be notified by email. Students must maintain regular attendance to lessons and ensembles unless alternatives are discussed with the Instrumental Music Coordinator
3. Regular practice is expected.
4. Enrolment is for a full school year. **Fees are non-refundable** as they are calculated to cover staffing of the program on an annual basis.

PAYMENTS AND FEES

Please note that Instrumental Music is an extra-curricular activity provided at the College and as such, attracts a compulsory fee. The funds raised are injected back into the program. Our expectation is that the program will continue to grow, and new opportunities will be offered each year. Please express your interest in this Program for 2025 by completing and the Expression of Interest Form.



INSTRUMENTAL MUSIC EXPRESSION OF INTEREST FORM

This form is to be completed as a (please tick):

New Student

Re-enrolling Student

Please return this completed form by email (russell.bannister@education.vic.gov.au) or return the hardcopy by 5 February 2025, attention Mr Russell Bannister - Music Co-ordinator.

Student Full Name (please print): _____

Year Level in 2025: _____

Music Experience (if applicable): _____

Parent/Guardian Name (please print): _____

Email address: (please print): _____

Parent mobile number: _____

Please choose up to 3 Instruments you wish to learn, in order of preference (not all Instruments may be offered, available and/or sessions may be full):



Flute	
Clarinet	
Saxophone	
Contemporary Voice	

Trumpet	
Trombone	
Violin	
Cello	

Viola	
Guitar (or Bass)	
Ukulele	
Drums/Percussion	

Piano	
Keyboard	
Electronic-DJ	
Garage Band	

If your child wishes to learn more than one instrument, please mark this box

Once your child has been accepted & enrolled in the 2025 Music Program, you will be able to make the following payment via Compass.

PAYMENT OPTIONS VIA COMPASS

Full Payment of \$295 (per instrument) on 6 February 2025 OR

Five (5) Instalments

Instalment Dates: 5 January / 2 February / 1 March / 22 March / 5 April 2025

Please select Program/s		
Instrumental Music Tuition - per Instrument @ \$295	<input type="checkbox"/>	\$
Instrument Hire (limited availability) @ \$175	<input type="checkbox"/>	\$
	Total	

PARENT/GUARDIAN ACCEPTANCE

1. Each student's enrolment in Instrumental Music will be for the duration of the school year. If a student wishes to un-enrol, discontinuation must be signed by the parents in writing. Verbal cancellations are not acceptable methods of notification by either the student or the parent/guardian.
2. The yearly fee of \$295 (per instrument) is non-refundable unless there are extenuating circumstances. Students commit to participate to the full year.
3. Heathmont College reserves the right to withhold instrumental lessons if payments are outstanding or overdue.
4. Heathmont College subsidises the Music Program, and as such any lessons cancelled due to school events or public holidays, cannot be made up. Students are encouraged to check their Compass Timetable to ensure lesson times are accounted for.
5. Students are encouraged to engage in the school's free ensembles to help develop their performance and musical skills.
6. In the case that a hired instrument is damaged, negotiation with families will take place prior to repair and required payment.

parent/guardian name: _____ (please print)

of student name: _____ (please print)

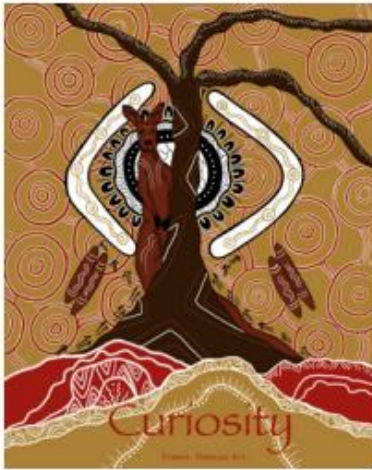
agree to the above terms & conditions and understand that the application form is to be read in conjunction with the 2025 Music Handbook that will be available in the Compass Event.

SIGNATURE: _____ DATE: _____

SCHOOL VALUES

Our school values clearly identify what we believe to be valuable across all aspects of education.

These values are:



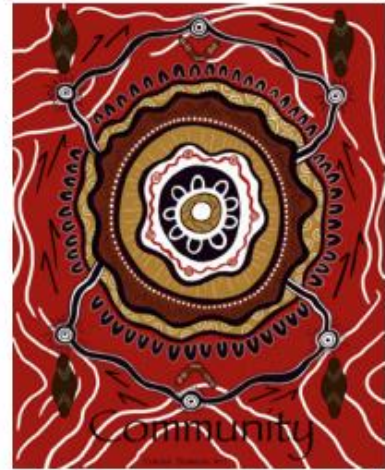
CURIOSITY

We have a desire for learning and a sense of hope and positivity. We celebrate growth when we understand new things.



COMPASSION

We respect each other and celebrate our differences. We show kindness to ourselves and others to help us build the resilience to achieve together.



COMMUNITY

We strive to build positive connections. We listen and respect all contributions and work together so everyone feels a sense of belonging.

and they underpin all aspects of education here at Heathmont College.





**HEATHMONT
COLLEGE**

Heathmont College
Wurundjeri Country
Waters Grove
Heathmont VIC 3135
ABN 24 370 034 733

 (03) 9871 4888
 heathmont.co@education.vic.gov.au

 heathmont.vic.edu.au